

# WORKSHOP

## London Planning



**Alton ACTION**



**29 March 2021**

### **Welcome to the workshop!**

We are a group of researchers from UCL, working in partnership with Alton Action and Just Space on a knowledge exchange project co-producing a community vision for Alton Estate.

This is a community engagement workshop that is part of this project: Co-designing neighbourhoods with communities in a blended environment: digital and face-to-face knowledge exchange (Ethics ID 9089/003)

You have been invited to participate in this workshop because you are a resident in Alton Estate. Participation is voluntary. You can engage in the conversations as much as you like and can leave the workshop at any time.

We will not be collecting any personal data. The aim of the workshop is to have a collective discussion about the future of Alton Estate.

The Principal Investigator of this project is Dr Pablo Sendra, who will now explain more details about the project. Feel free to ask any question to Pablo either on the chat or unmuting yourself before deciding to participate on the workshop. If you have further questions, please email [pablo.sendra@ucl.ac.uk](mailto:pablo.sendra@ucl.ac.uk)

The results of this project will be published in a report. The report will be available in Alton Action ([altionaction.org](http://altionaction.org)), UCL ([reflect.ucl.ac.uk/community-led-regeneration](http://reflect.ucl.ac.uk/community-led-regeneration)) and Just Space ([justspace.org](http://justspace.org)) websites.

Code of practice: This workshop aims to enable discussion about the future of Alton Estate. When participating, please use non-discriminatory language and be respectful to other participants.

## What we have done so far

1. October: Launch event
2. November: Co-assessing the impact of regeneration on residents
3. December: Co-designing proposals
4. January: Feedback on preliminary proposals
5. February: Sustainability
6. 7<sup>th</sup> March: Additional feedback on proposals
7. Today: London Planning (Just Space)

Forthcoming:

Heritage

Public exhibition

Further feedback

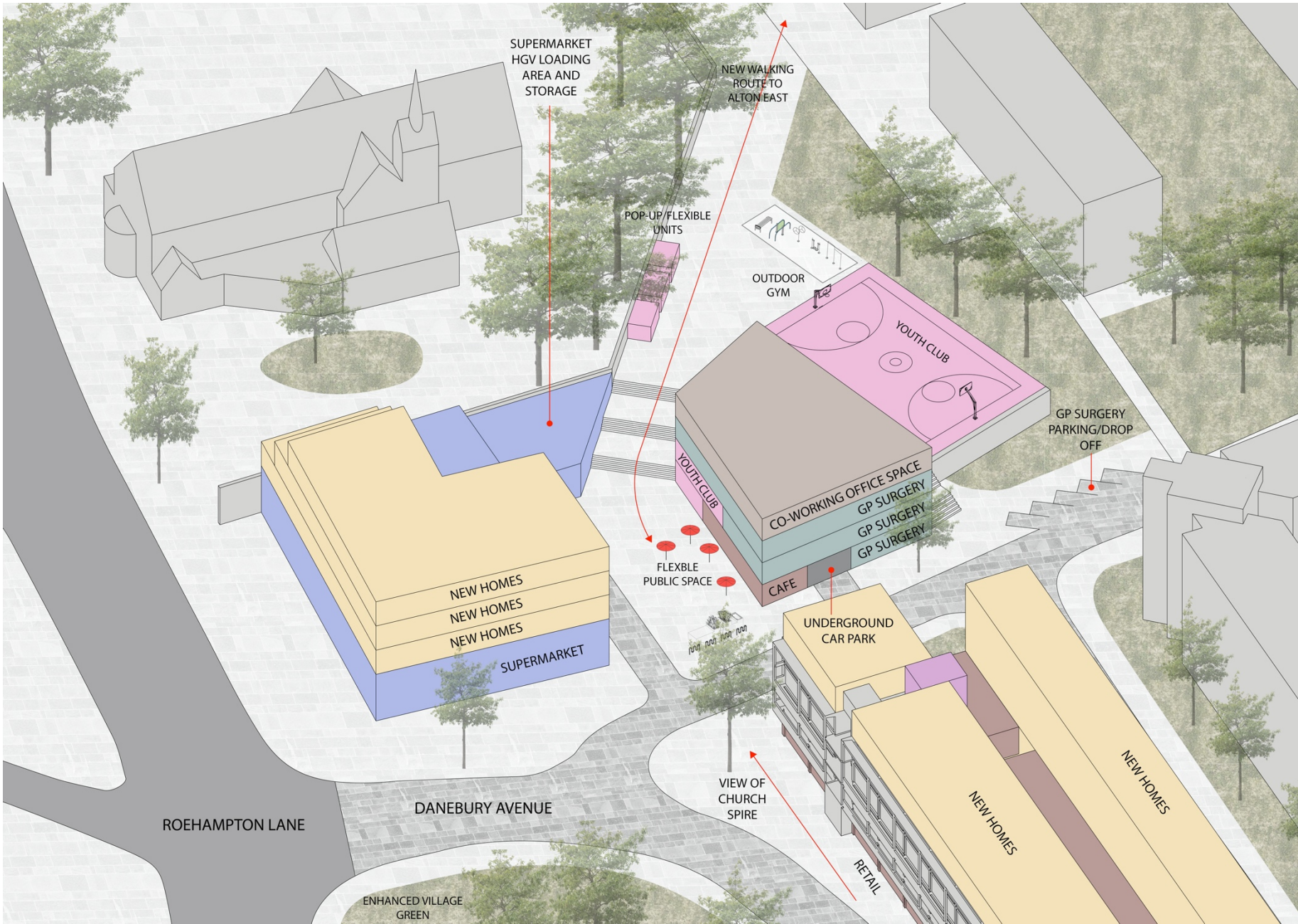
Please fill in our survey: <https://redcap.link/0uql8wck>

- New Residential
- New Lift Access
- Community Space
- Retail
- Supermarket
- Live-in Entrepreneurs' Studios
- Co-working Office Space
- Underground Parking below supermarket



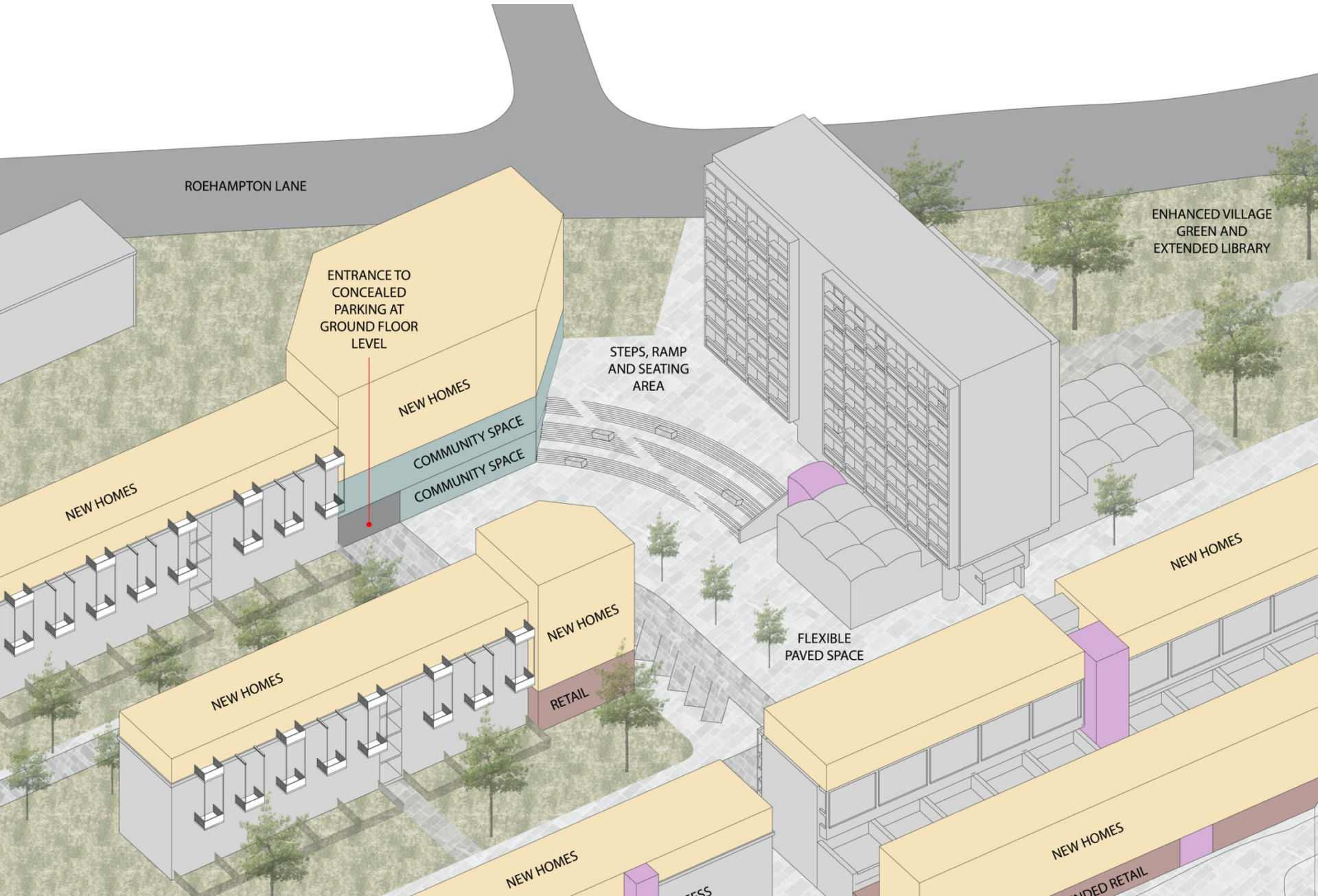


Site A

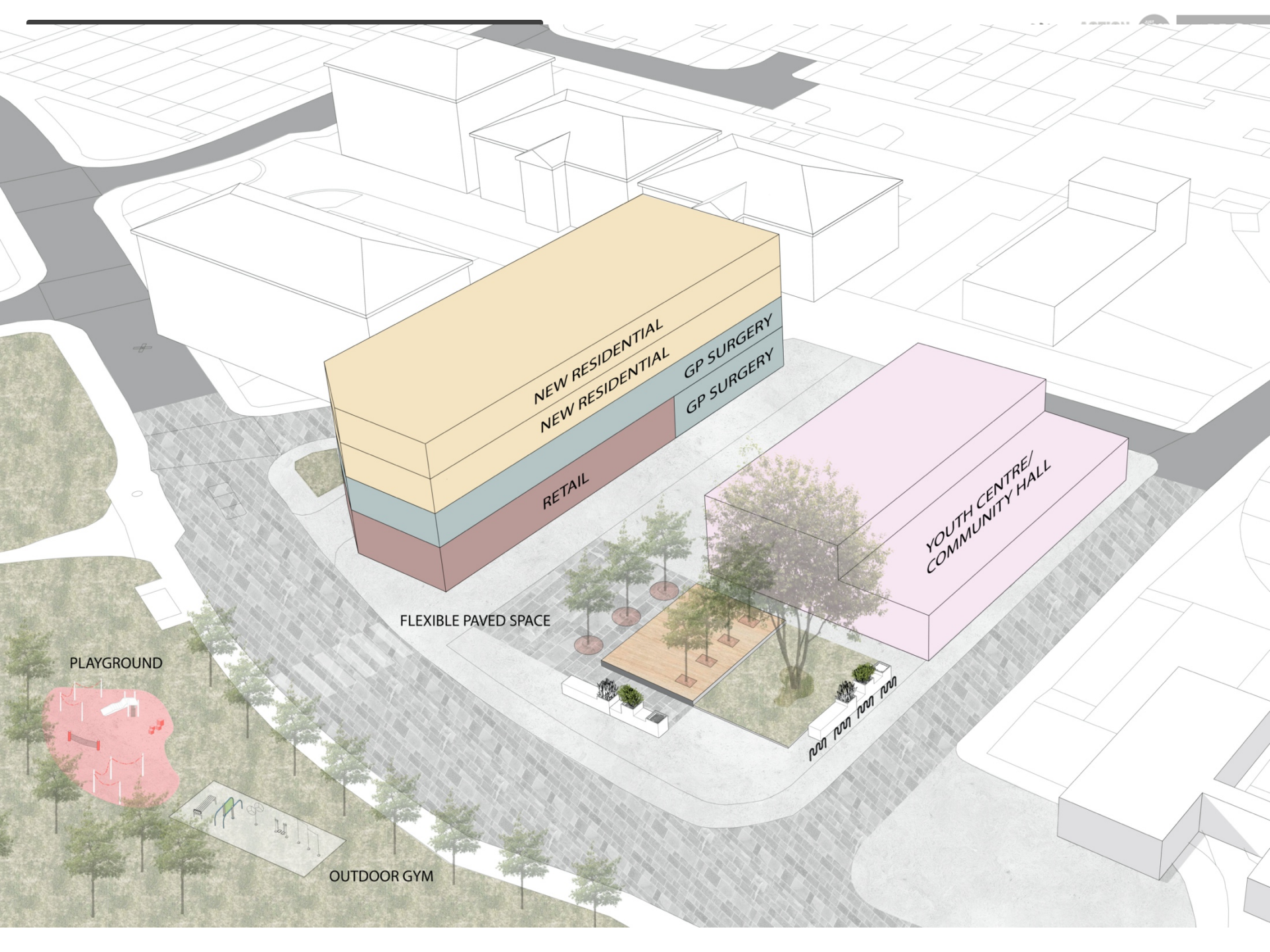




# Albrook House







NEW RESIDENTIAL  
NEW RESIDENTIAL

GP SURGERY  
GP SURGERY

RETAIL

YOUTH CENTRE/  
COMMUNITY HALL

FLEXIBLE PAVED SPACE

PLAYGROUND

OUTDOOR GYM

Please complete the survey

<https://redcap.link/0uql8wck>